

PRODUCT SHEET

BMS Cell Interface

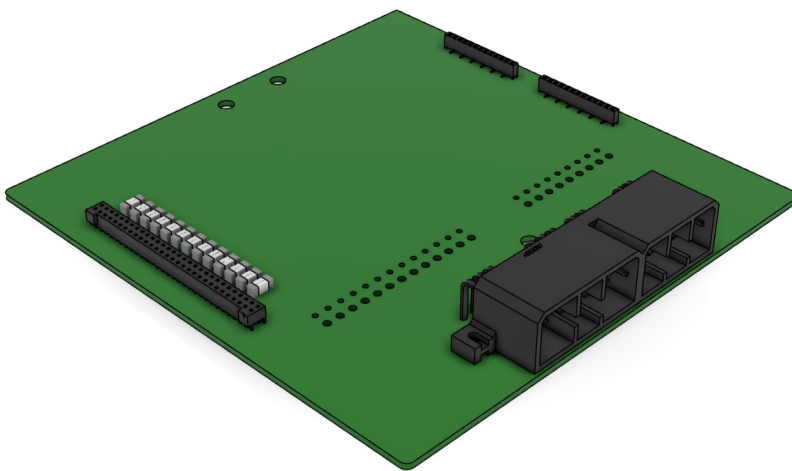
P061Q-0003-00

OVERVIEW

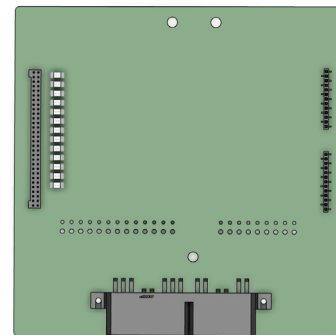
The Cell Interface is part of the Viritech Battery Management Ecosystem and provides an interface between the individual battery cell and the Module Level Unit. The Cell Interface attaches directly to the Module Level Unit via a compact 60 way connector and provides options for a range of cell connection methods including bolt to, solder to and removable connector. The Cell Interface is designed for development, prototype and low volume applications. A bespoke or application specific variant is available via Viritech's Engineering Services division.

KEY POINTS

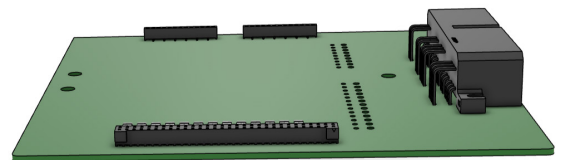
- Supports 12 Battery Cells
- Easy Connection To Viritech Module Level Unit
- Multiple Cell Connection Options
- Bespoke Variant Available



Front view



Top view



Side view



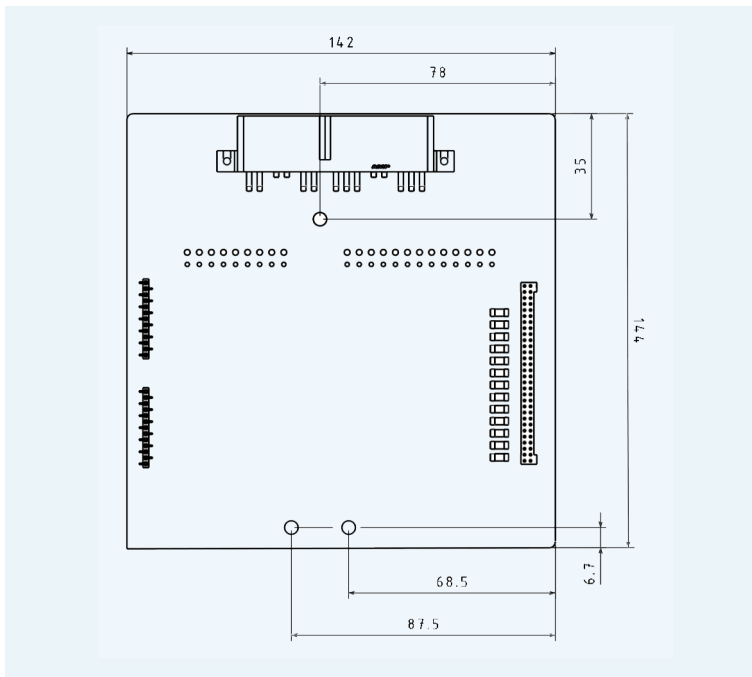
View this product on our website at www.viritech.com/bms

PRODUCT DESCRIPTION

The Cell Interface is part of the Viritech Battery Management Ecosystem and provides an interface between the individual battery cell and the Module Level Unit. The Cell Interface attaches directly to the Module Level Unit via a compact 60 way connector and provides options for a range of cell connection methods including bolt to, solder to and removable connector. The Cell Interface is designed for development, prototype and low volume applications. A bespoke or application specific variant is available via Viritech's Engineering Services division.

Bespoke variants can be created for specific battery cell and module designs to suit individual customer requirements. Each Cell Interface can support up to 12 battery cells along with connections for temperature and voltage measurement for each cell.

TECHNICAL DRAWING



TECHNICAL INFORMATION

Temp Sensor Connections	12
Voltage Connections	12
Max Balancing Current	1 Amp
Supported Cell Chemistries	Multiple: NMC, LFP, LTO etc. via Module Level Unit.
Unit Connector	1 X 60 Way
Mating Connector Available	Yes
Bespoke Variant Available	Yes
OEM Branding Available	Yes
OEM Part Numbering	Yes
Vehicle Communications	NA
Local Market Manufacturing Option	Yes
ASIL Compliance	ASIL D In Volume As Part Of Full BMS
IP Rating	Dependant On Module Housing
Available Volumes	1 to 000's
Length Excluding Connector	144 MM
Width Between Mountings	142 MM
Height	13 MM
Weight	150 Grams

PRODUCT ORDERING

Please contact sales@viritech.co.uk to discuss your system and vehicle integration requirements for this product.